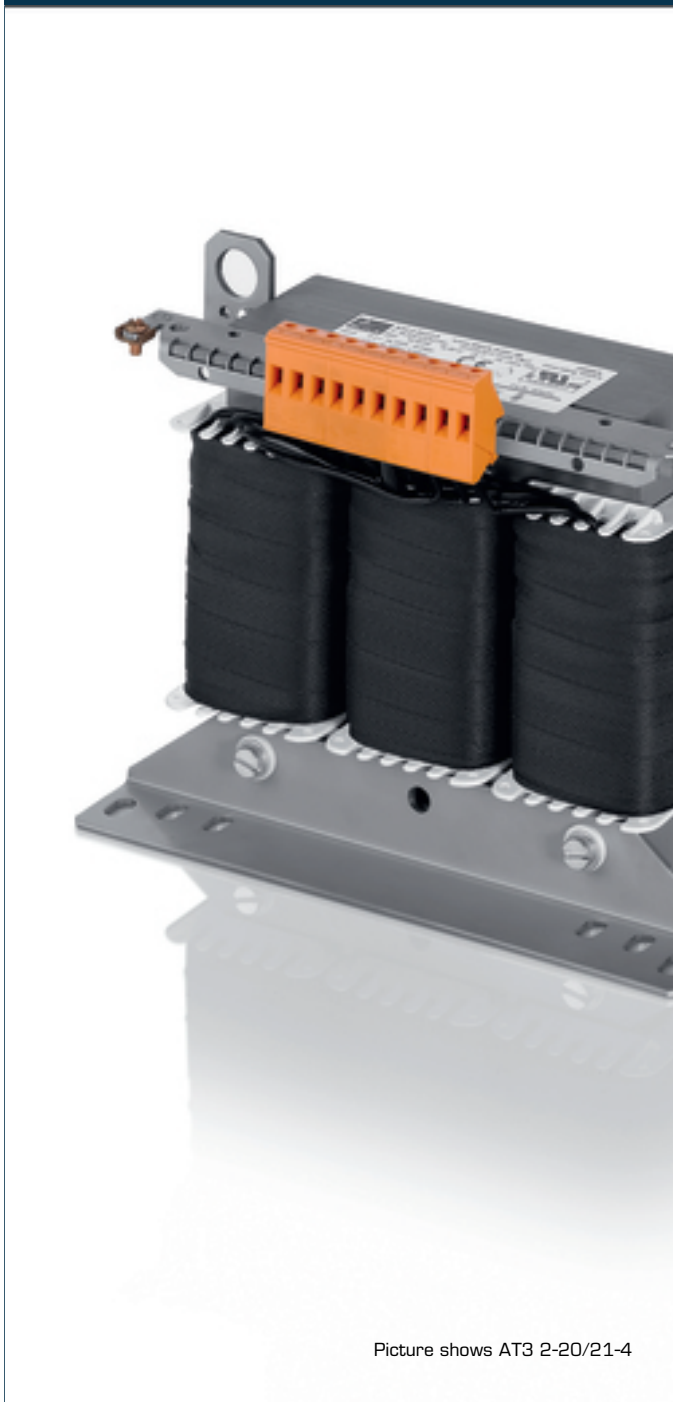


# Autotransformer

## AT3 250-69-4



Picture shows AT3 2-20/21-4

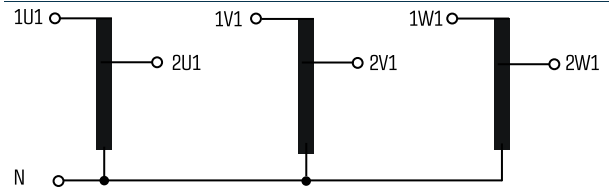
## Advantages

- Low weight and small size (compared to isolating transformers)
- Very high efficiency
- Patented assembly technology to lower heat losses
- Very good corrosion protection and low noise thanks to vacuum impregnation
- Fixed, contact protected screw connection terminals complying with UVV BGV A3
- Multifunctional fixing rails with 12 oval slots
- Enlarged fixing rail for easy installation from above
- Integrated crane eyes

## Applications

Autotransformer for adjustment of the voltage on the input and output sides with no requirement for electrical isolation.

## Sample application

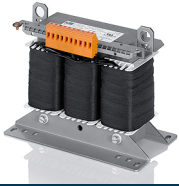


## Standards



Autotransformer  
to: VDE 0570 Teil 2-13, DIN EN 61558-2-13, EN 61558-2-13,  
IEC 61558-2-13

## Approvals



# Autotransformer AT3 250-69-4

Type		AT3 250-69-4
Electrical data	Input	
	Rated input voltage	3 x 690 Vac
	Rated frequency	50 - 60 Hz
	Output	
	Rated output voltage	3 x 400 Vac
	Rated Power	250.000 VA
	Vector group	YNΔ0
	Efficiency	98.0 %
	Approvals	-
	Environment	
Ambient temperature max.	40 °C	
Safety and protection		
Type	Open type	
Insulation class	F	
Protection index	IP 00	
Safety class (prepared)	I	
Short circuit strength	non-short-circuit proof	
Test voltage	4000 Vac, 50 Hz	
Order numbers		
Recommended enclosure	BGE-130	
<b>Order Number</b>	<b>AT3 250-69-4</b>	

Type		AT3 250-69-4
Mechanical data	Terminal and mounting	
	Fixing method	Fixing rail
	Fixing screws	M16
	Terminals	Screw-type terminals
	Measures and weights	
	Core type	3 UI 375/150
	Weight	510.0 kg

